



**EU GREEN DEAL**

**MAKE IT  
REAL**

**CIRCULAR ECONOMY**

**PARTNER EVENT**  
**#EUGREENWEEK**  
**30 MAY – 5 JUNE 2022**



Nordic capital regions:

**Circular buildings  
- constructing  
differently and  
sustainably**

**NEXT  
GEN  
EU**

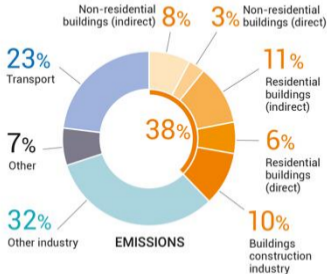
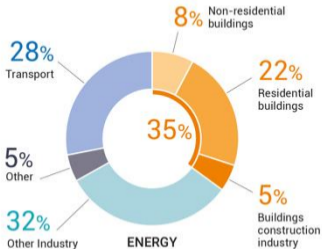




- What are the key contextual factors for Innlandet region (and Eastern Norway) that shape our activities?
- Brief overview of some regional development initiatives

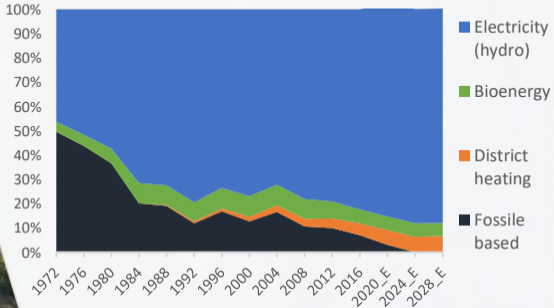
MJØSTÅRNET

# 2020 GLOBAL STATUS REPORT FOR BUILDINGS AND CONSTRUCTION



Sources: (IEA 2020d; IEA 2020b). All rights reserved. Adapted from "IEA World Energy Statistics and Balances" and "Energy Technology Perspectives".

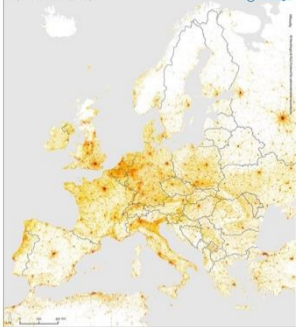
# Energy mix matters: Energy sources in heating



# Population density matters

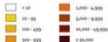
Population density 2015

Nordregio

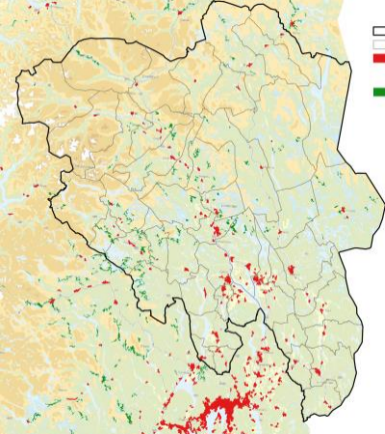






The Global Human Settlement population map shows data from census or administrative units, disaggregated to grid cells measuring 3000 x 3000 meters. They are informed by the distribution and density of built-up surface as mapped in the Global Human Settlement Layer

Population per grid cell  
(in number of inhabitants)



Data source: ESA, Joint Research Centre,  
European Commission



-  Innlandet County
-  Municipality
-  Settlements  
(A collection of houses with maximum 50 meters apart and with a minimum 200 people living there.)
-  Second home settlements (Shown: A collection of 100 second homes with maximum 70 meters apart)



Inland Norway  
University of  
Applied Sciences



østlandsforskning  
EASTERN NORWAY RESEARCH INSTITUTE



## **II. Regional initiatives**

MJØSTÅRNET

I.

# Reducing climate impact through preservation and renovation

asplan  
viak



energibbygg

— 20 21 22 —

Bevar bygg -  
Bevar klima

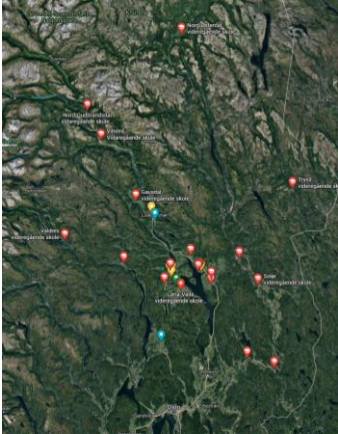


Innlandet  
fylkeskommune



# II.

## Heartwood: Reforming rural competence eco-systems





MJØSTÅRNET

# III. Stimulating innovation in carbon-storing building systems





IV: Cirkwood  
Reduce waste  
800 000 tonn wood  
annualy

SirkTRE

# Establish the fully circular value chain for wood

Share of norwegian commitments on climate reduction



20 companies | 5 R&D | 5 organisations

SirkTRE



# Ongoing R&D projects:

*CircTimber*: Digital transformation towards Circular Timber Construction in Europe

*Sirktre* – Recycling waste wood

*Wood4Health*: Health effects of timber based internal environments

*1-2-TRE-STEIG* (Norges forskningsråd)

*Heartwood*: Reforming rural competence ecosystems

MJØSTÅRNET



Innlandet  
fylkeskommune



NORWEGIAN  
WOOD CLUSTER



NTNU



**Kristine Nore**

[Kristine.nore@omtre.no](mailto:Kristine.nore@omtre.no)

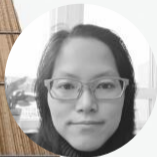
Project manager  
Sirktre  
NTNU/Omtre



**Eivind Merok**

[Eivind.merok@innlandetfylke.no](mailto:Eivind.merok@innlandetfylke.no)

Project manager  
Biovalley  
Innlandet Fylkeskommune



**Lizhen Huang**

[lizhen.huang@ntnu.no](mailto:lizhen.huang@ntnu.no)

Associate Professor  
NTNU



**Marit Sletmoen**

[Marit.sletmoen@innlandetfylke.no](mailto:Marit.sletmoen@innlandetfylke.no)

International advisor  
Innlandet fylkeskommune