



**STOCKHOLM
GREEN INNOVATION
DISTRICT**

How to shape sustainable,
beautiful, and inclusive city
districts.

#NewEuropeanBauhaus



Welcome!

Ms. Anne Andersson

CEO at Stockholm Region EU Office.



Stockholm Green Innovation District.

Mr. Östen Ekengren, Managing
Director of SGID.





Stockholm Green Innovation District

- new housing for at least 20,000 people
- new jobs for at least 20,000 people

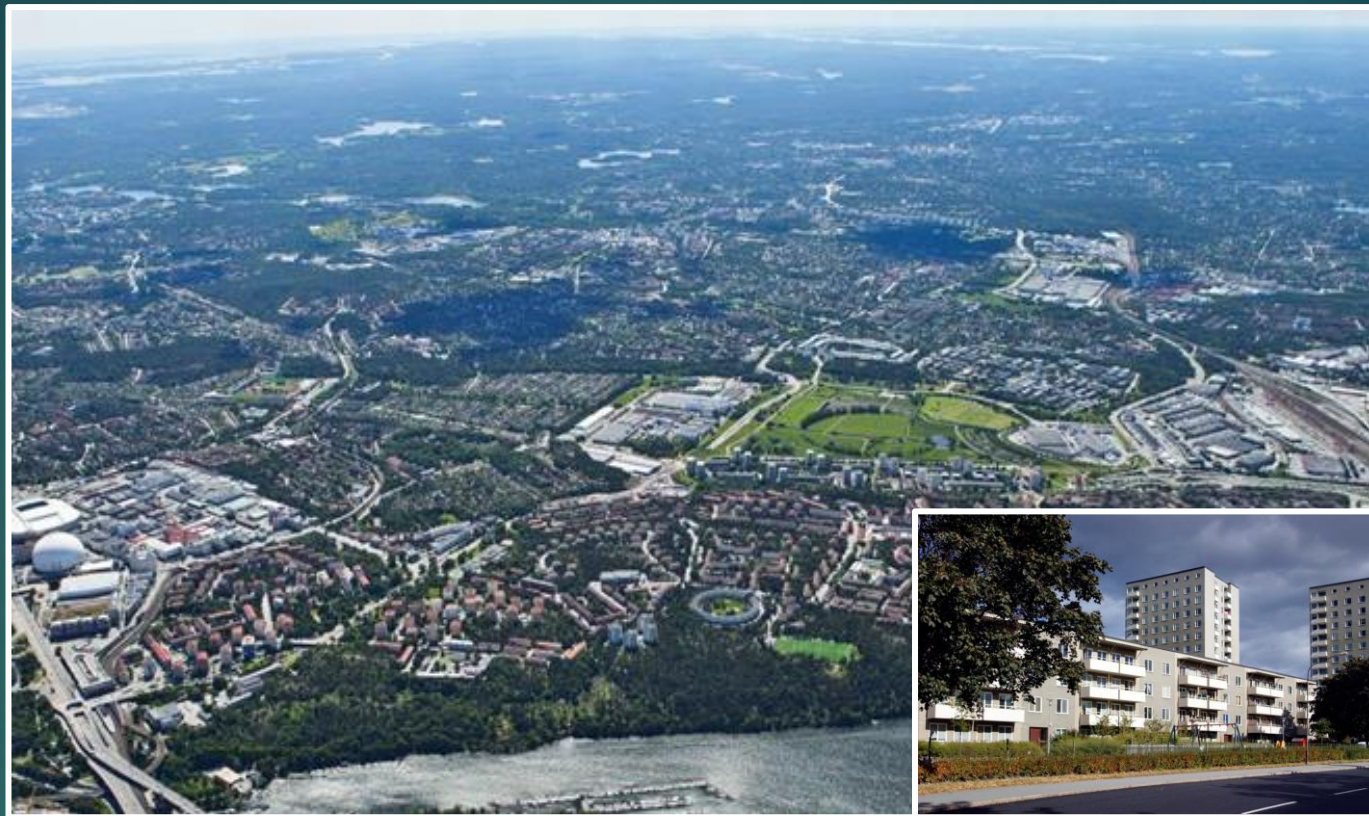
Partners: Atrium Ljungberg, ElectriCITY Innovation, Internetstiftelsen, IVL, KTH, Nacka Kommun, Rise, Skanska, Skistar, Smart City Sweden, Stockholm Exergi, Stockholmsregionens Europakontor , Stockholm City, SVOA, SWIC.



Aim with SGID

Renew and build sustainable city districts with innovative climate smart solutions

-We want to share our experiences with other districts and Cities in Sweden and abroad.



Stockholm City: Årsta – GrowSmarter

Redevelopment of a residential area from the 1960s. EU project in collaboration with Barcelona and Cologne, new technologies for climate-smart solutions for buildings, infrastructure and mobility.



Atrium Ljungberg: Globen/Slakthusområdet

“The Slakthus” area is being developed by Atrium Ljungberg in collaboration with the City of Stockholm and other property owners. By 2030, the area will be developed into a strong destination, a meeting place for food, culture and experiences, and an engine for the entire southern suburbs.

Skanska: Sthlm New



Natural expansion of the inner city by offering attractive and accessible urban environments -
Connecting Hammarby Sjöstad and Gullmarsplan through smart city architecture -
Sustainability in construction - Life cycle thinking Adds approximately 6,000-8,000 workplaces
in Hammarby Sjöstad. Companies from different industries - Through co-working and easily
accessible meeting places, smaller companies can establish themselves. Strengthens the
emergence of cross-industry local networks.



20,000 inhabitants, 10,000 jobs

Citizen-driven innovation platform – ElectriCITY with around 60 members and partners in collaboration with around 50 housing associations. Goal: Climate-neutral city district by 2030

System transformation in energy use, mobility, recycling and sharing. Joining forces to support the transition.



Atrium Ljungberg: Stockholm Wood City

In Sickla, Atrium Ljungberg is developing a completely new area, Stockholm Wood City. The old industries has over years been converted into offices, retail and culture arenas. The latest take in the development plans is to build all future buildings with wooden framing. This as a step to reduce the carbon footprint in production and to create unique environments form residentials, offices and services. The project will be the world's largest city district in wood with more than 30 buildings.

Sustainable architecture and timber-based urban planning.

Mr. Håkan Hyllengren, Business
developer at Atrium Ljungberg.



An aerial photograph of Stockholm, Sweden, at dusk. The city's dense urban landscape is visible, with a mix of traditional and modern architecture. In the foreground, a large, modern development is under construction or recently completed, featuring long, low-rise buildings with extensive green roofs and glass facades. The text "STOCKHOLM WOOD CITY" is overlaid in large, white, sans-serif capital letters across the center of the image.

STOCKHOLM WOOD CITY



ATRIUM
LJUNGBERG



We create attractive
and sustainable urban
environments where people want to
spend time, today and in the
future.

Sustainability goals



Society.

To develop socially, environmentally and financially sustainable locations in the city where everyone wants to live.

Customer.

We create sustainable properties and premises where our customers want to use for a long time to come.

Suppliers.

We take ethical responsibility and collaborating with our suppliers for sustainable supply chains.

Employees.

Creating trust, satisfaction and equal opportunity for the people working with us.

Investors.

Constituting a long-term sustainable investment for our owners.

Contribution to UN Global Goals



Measurable goals

-Achieve 90% in the Vår stad index 2030

-50% reduced CO2e footprint from planned projects by 2025 and 75% reduction by 2030

-100% of significant purchases must be evaluated by 2025

-Over 5.5 / 7 in the Employee Index HFW (Human Financial Wellness)

-Over 50% Taxonomy compliant turnover in 2025
-Sustainable linked bonds

External verifications

Vår stad index



Human Financial Wellness Index

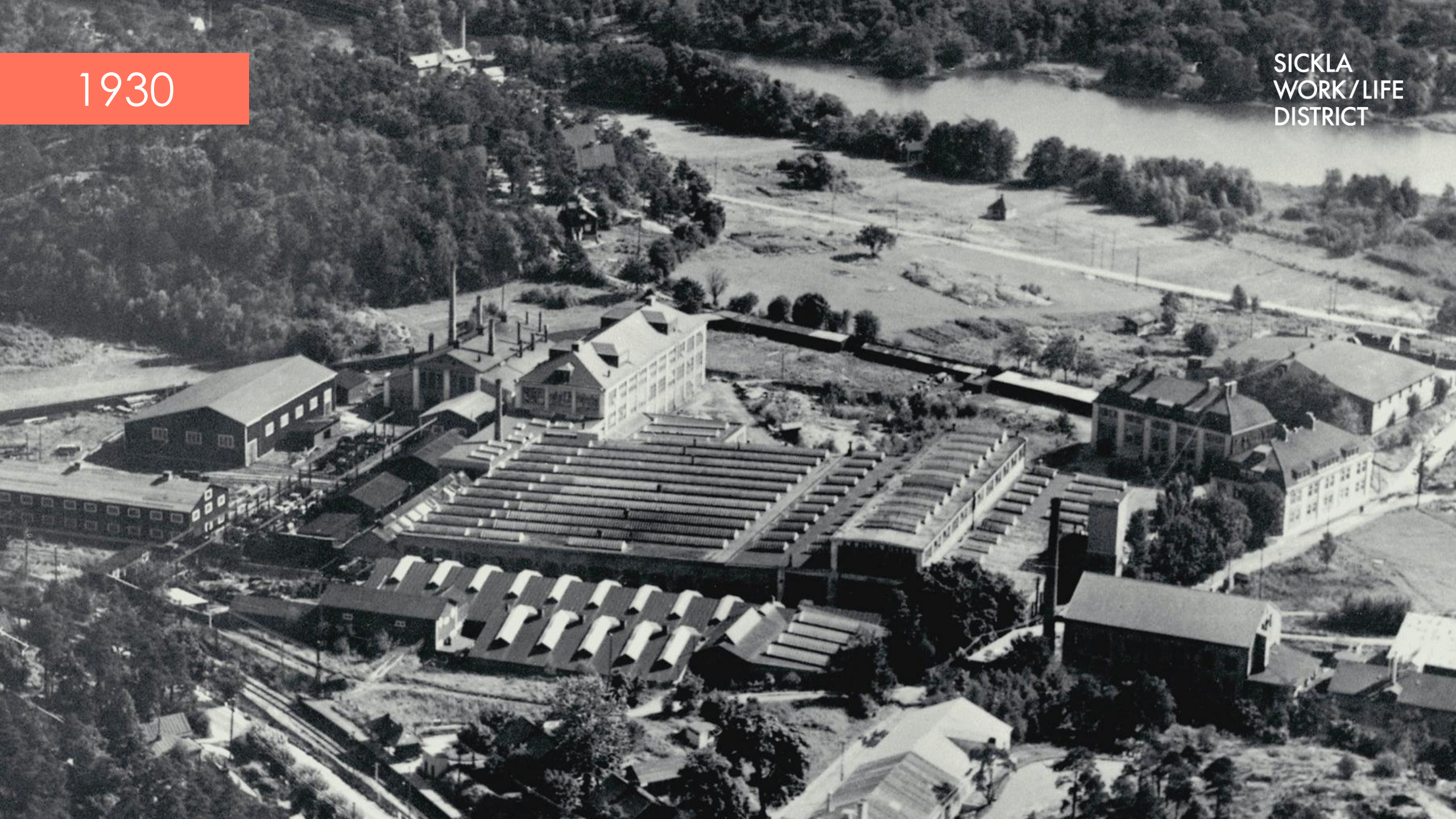


An aerial photograph of Stockholm, Sweden, at dusk. The city's dense urban landscape is visible, with a mix of traditional and modern architecture. In the foreground, a large, modern development is under construction or recently completed, featuring long, low-rise buildings with extensive green roofs and glass facades. The text "STOCKHOLM WOOD CITY" is overlaid in large, white, sans-serif capital letters across the center of the image. The sky is a warm, golden color, and the city lights are beginning to glow.

STOCKHOLM WOOD CITY

1930

SICKLA
WORK/LIFE
DISTRICT



A 15 MINUTE CITY

SICKLA
WORK/LIFE
DISTRICT



2035

SICKLA
WORK/LIFE
DISTRICT



THE WORLD'S LARGEST CITY DISTRICT IN WOOD

SICKLA
WORK/LIFE
DISTRICT



7,000

NEW
WORKPLACES



SICKLA
WORK/LIFE
DISTRICT

2,000

NEW
APARTMENTS



WHY CHOOSE WOOD CONSTRUCTION



SICKLA
WORK/LIFE
DISTRICT

SUSTAINABILITY ALWAYS IN FOCUS

SICKLA
WORK/LIFE
DISTRICT



An aerial photograph of Stockholm, Sweden, at dusk. The city's dense urban landscape is visible, with a mix of traditional and modern architecture. In the foreground, a large, modern development is under construction or recently completed, featuring long, low-rise buildings with extensive green roofs and glass facades. The text "STOCKHOLM WOOD CITY" is overlaid in large, white, sans-serif capital letters across the center of the image. The sky is a warm orange and yellow, suggesting sunset or sunrise. The water of the city's harbor is visible in the distance, along with the city's iconic islands and bridges.

STOCKHOLM WOOD CITY

Sustainable water treatment and citizen engagement

Mr. Östen Ekengren, Managing
Director of SGID.



Global water stress

WATER STRESS BY COUNTRY

ratio of withdrawals to supply

- Low stress (< 10%)
- Low to medium stress (10-20%)
- Medium to high stress (20-40%)
- High stress (40-80%)
- Extremely high stress (> 80%)

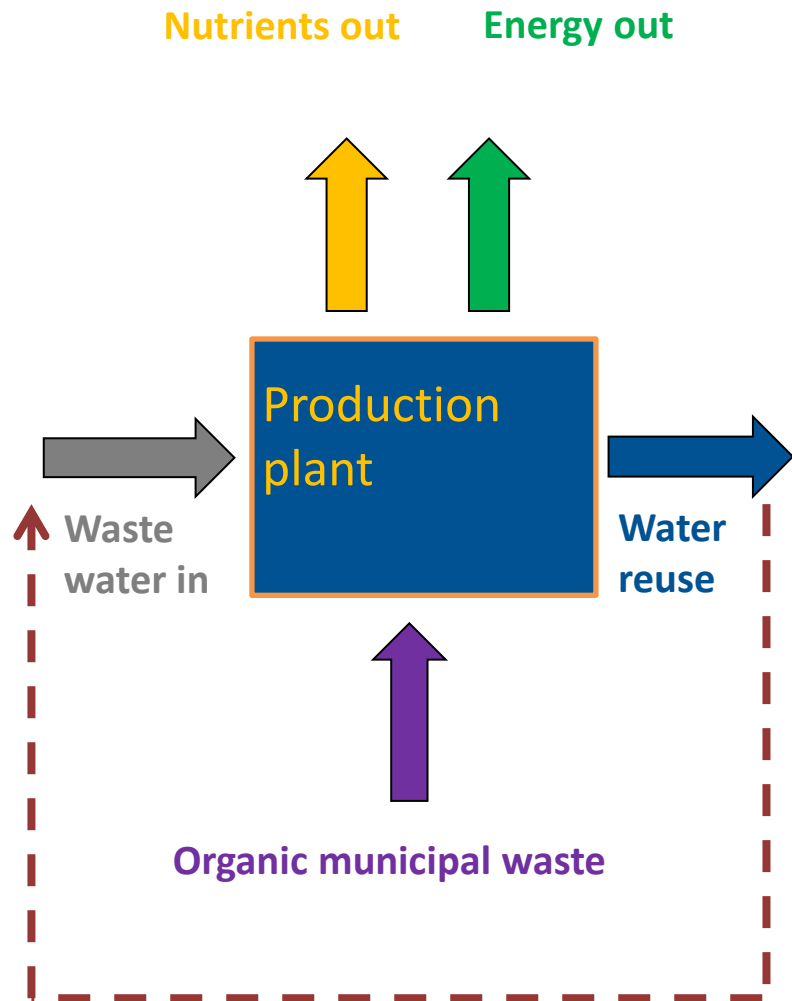
This map shows the average exposure of water users in each country to water stress, the ratio of total withdrawals to total renewable supply in a given area. A higher percentage means more water users are competing for limited supplies. Source: WRI Aqueduct, Gassert et al. 2013

Testbed Hammarby Sjöstadsverk

An unique pilot- and demonstration facility for innovations in water treatment



Waste water treatment plant of the future - A production facility

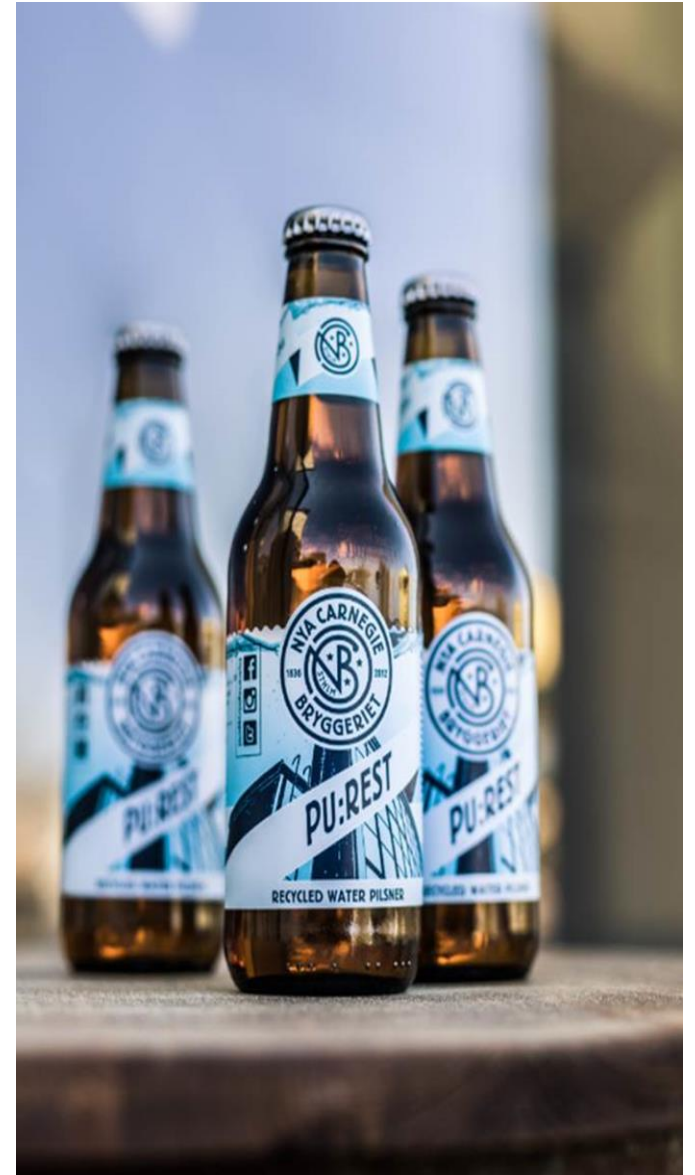


Opportunities

- Waste/wastewater as a resource
- Energy optimization-use and production
- Nutrients recovery
- Improved treatment
(P, N, Pharmaceutical residues ,POPs, PFAS , Covid-19 et al)
- Water reuse
- New business models

Beer brewed on reused waste water

- PU:REST – Sweden's first beer brewed on waste water
- Water from Stockholm Wastewater
- Collaboration with IVL



Circular water solutions

a network of Swedish

Companies representing different technologies ,

Different maturity and with high ambitions. The

Aim is to:



- **Raise awareness of the need for circular solutions and increase the implementation of circular solutions**

- **Help large companies and society to reduce their footprints through the introduction of circular solutions**

-

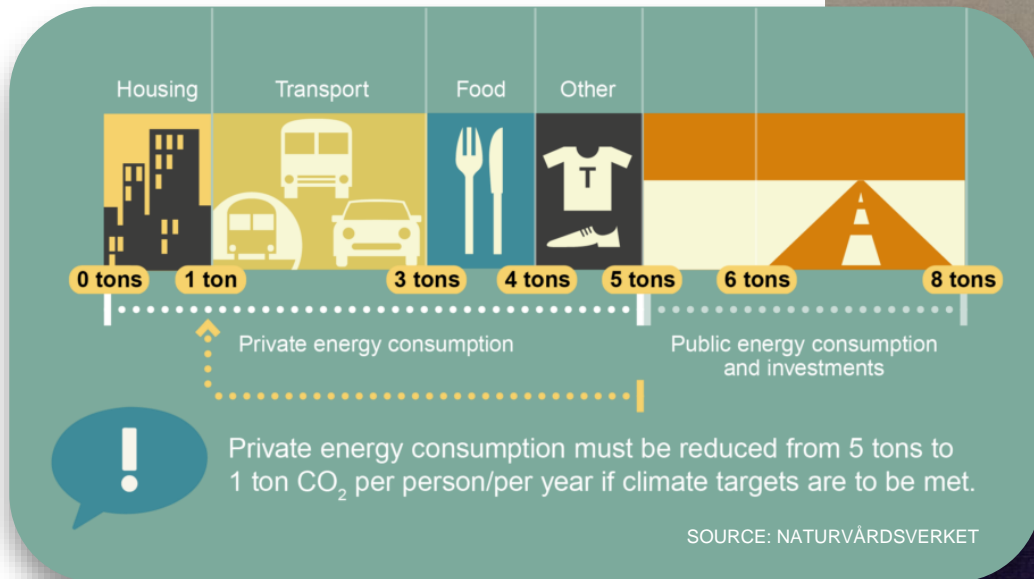
- **To stimulate the development of complete solutions where smaller companies and startups can complement the offer**

- **Stimulate the development of new solutions and verify these via testing and Demo projects with complementary funding**

HOW CAN CITIES WITH A GOAL
TO BECOME CLIMATE
NEUTRAL ENGAGE CITIZENS?

STOCKHOLM GREEN INNOVATION DISTRICT

Facts for change: Every citizen can make a difference



Housing associations

- Joint ownership of the entire house
- Sjästadsföreningen – organisation representing 16.000 inhabitants
- Learning and sharing experience in meetings



ENERGY COMMUNITY

HAMMARBY SJÖSTAD

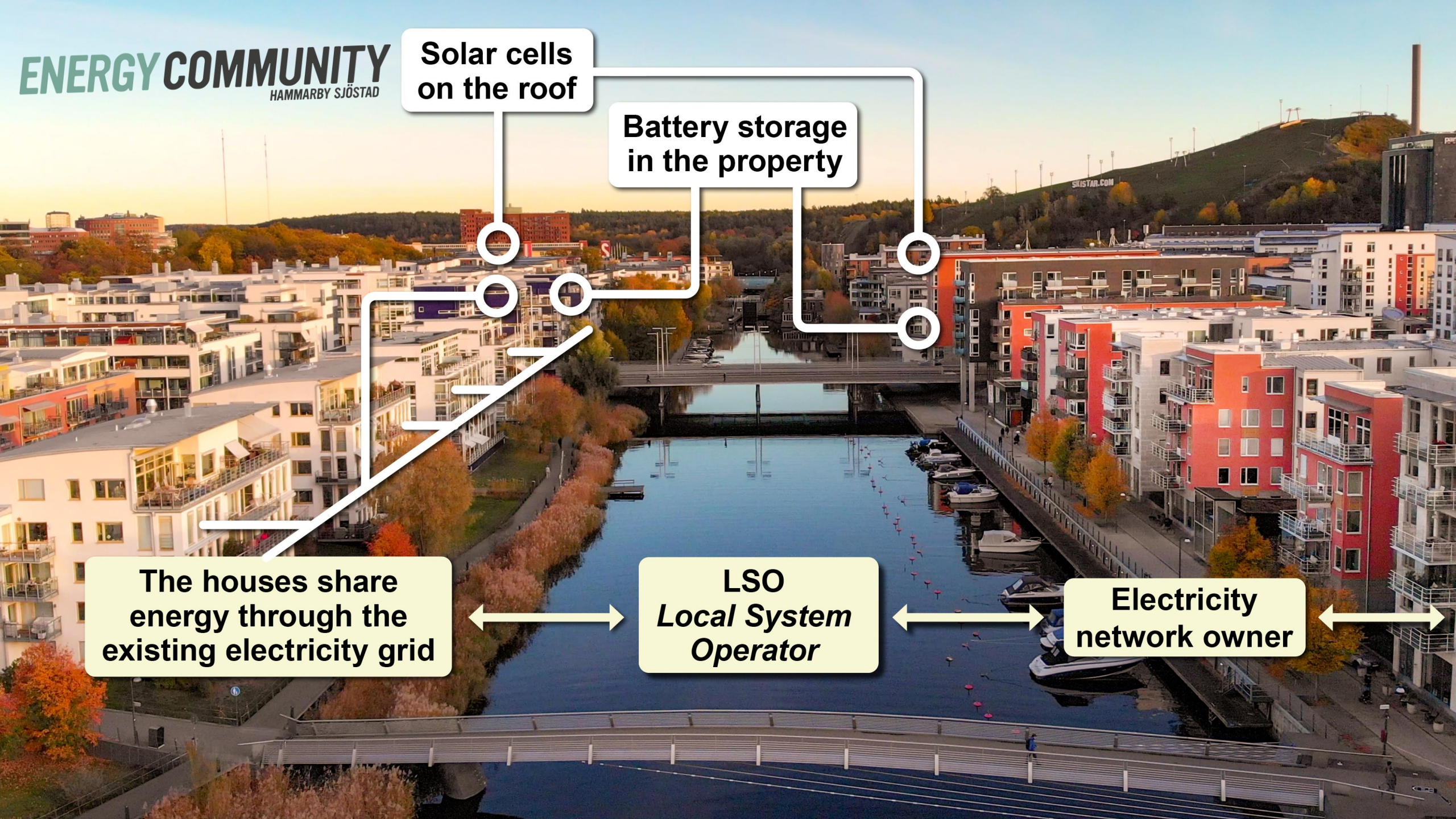
Solar cells on the roof

Battery storage in the property

The houses share energy through the existing electricity grid

LSO
Local System Operator

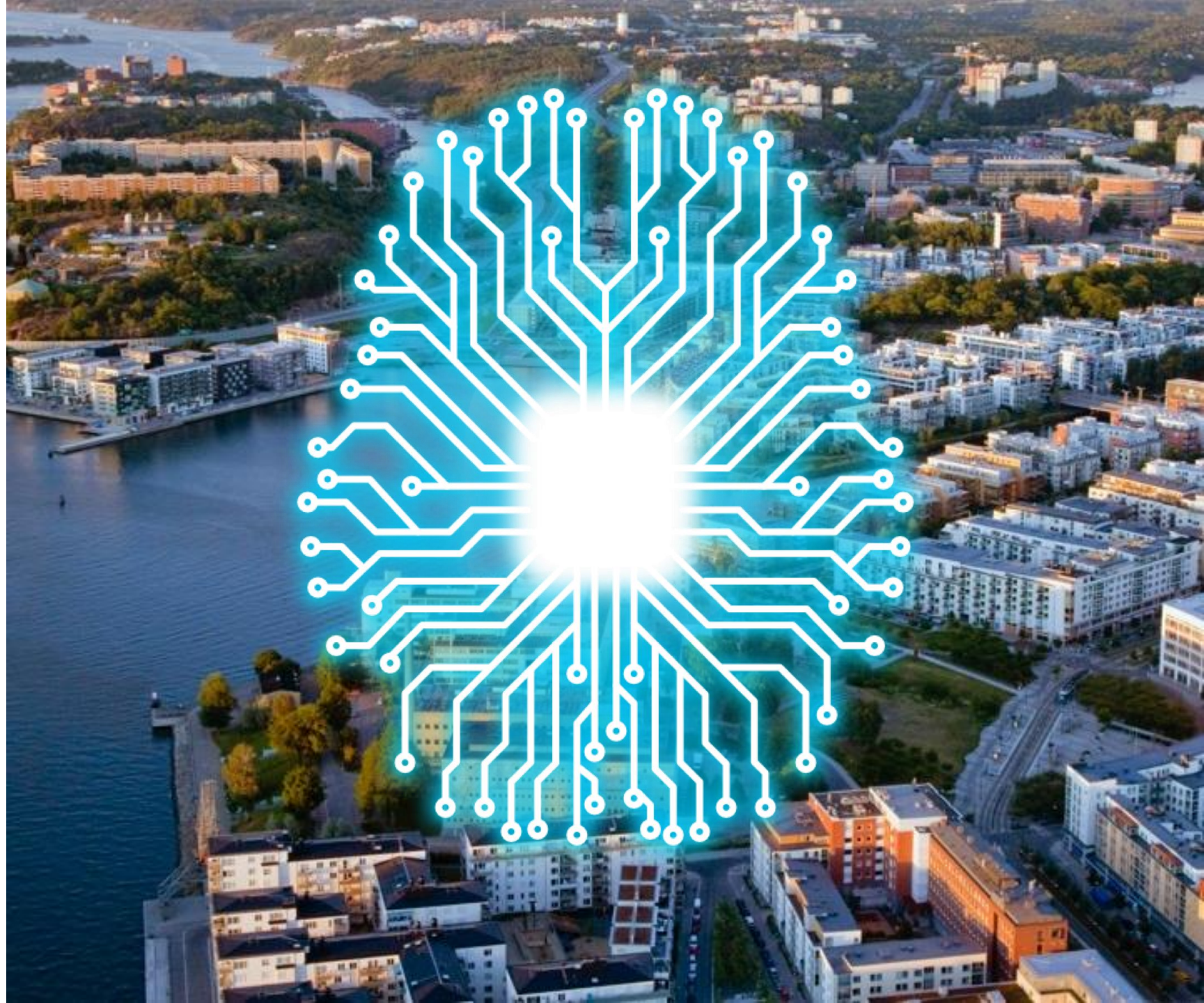
Electricity network owner



**STOCKHOLM
GREEN INNOVATION
DISTRICT**

Digital platforms for neighbors.

- Civitech
- Digital platforms
- Direct democracy
- IoT and smart sensors
- Smarter houses



STOCKHOLM
GREEN INNOVATION
DISTRICT

Facts for change:
Every citizen can
make a difference.

- Give facts on citizens' climate footprint
- Support local citizen organizations
- Initiate practical projects
- Show that it is profitable to be climate smart





**STOCKHOLM
GREEN INNOVATION
DISTRICT**



#NewEuropeanBauhaus

Thank you!



[stockholm
region.org](https://stockholmregion.org)



[@sthlm
euoffice](https://twitter.com/sthlm_euoffice)



[@Stockholm
Region EU
Office](https://www.linkedin.com/company/Stockholm-Region-EU-Office)